



166 Scarborough Drive, Minster On Sea  
Sheerness

£410,000



# 166 Scarborough Drive

Minster On Sea, Sheerness

3 bedroom detached house. Prime location. Open plan kitchen/diner, versatile conservatory, sunny lounge, well-maintained garden, garage. Close to beach, shops, and schools.  
Council Tax band: E

Tenure: Freehold

EPC Energy Efficiency Rating: C

EPC Environmental Impact Rating:

- Spacious 3 double bedroom detached family home situated in a sought after location
- Sunny and versatile conservatory with new roof covering
- Handy downstairs cloakroom
- Beautiful open plan kitchen diner with doors to conservatory
- Secluded and well maintained garden with patio and mature flower borders
- A stones throw from award winning beach with sea views from the property
- Corner plot with parking to the front and side of the property and detached garage
- Sunny lounge with feature fireplace and double aspect windows
- Close to the sea, local village shops, bus routes, schools and Historic Abbey







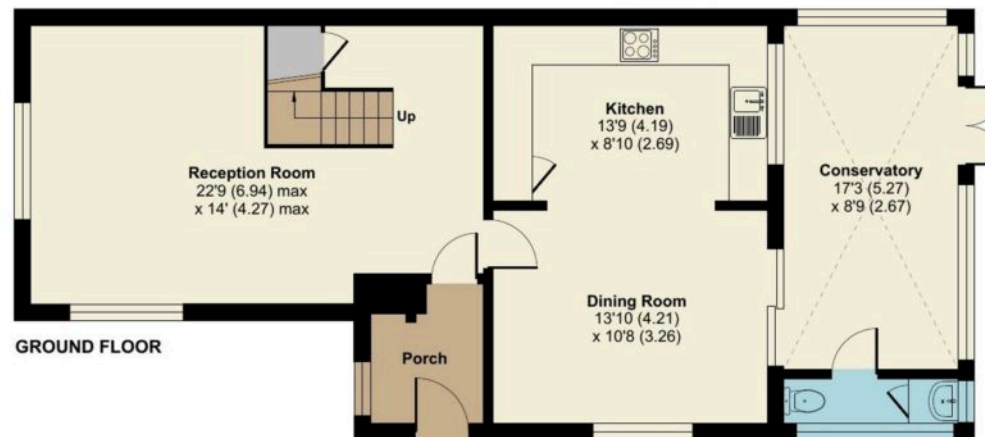
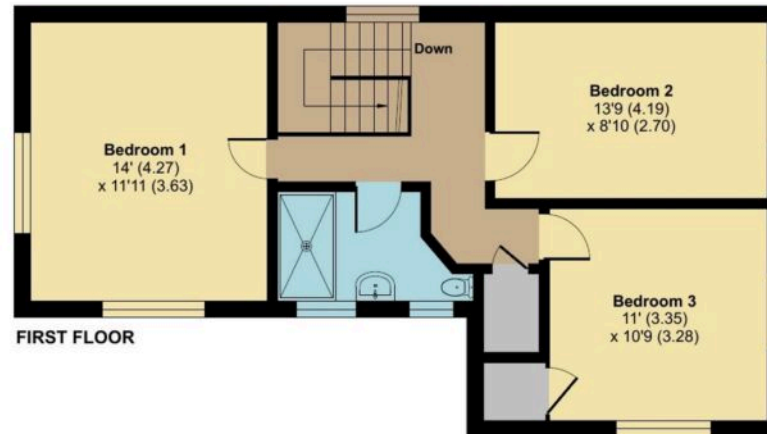




# Scarborough Drive, Minster On Sea, Sheerness, ME12

Approximate Area = 1436 sq ft / 133.4 sq m

For identification only - Not to scale



Floor plan produced in accordance with RICS Property Measurement Standards incorporating International Property Measurement Standards (IPMS2 Residential). © nchecon 2024. Produced for Lynne Collins Property. REF: 1257236





## Homely Bespoke Estate Agents

10 Orchard Way, Eastchurch – ME12 4DS

07817 727321

[lynne@homelyproperties.co.uk](mailto:lynne@homelyproperties.co.uk)

[www.homelyproperties.co.uk](http://www.homelyproperties.co.uk)