



15-17 High Street, Queenborough  
Queenborough

Guide Price £325,000 – £350,000



# 15-17 High Street

Queenborough, Queenborough

GUIDE £325,000 - £350,000 Charming 3 bed semi detached home in Queenborough's historic High Street, near sea/harbour. Close to coastal walks and amenities. Contact Lynne to view.  
Council Tax band: TBD

Tenure: Freehold

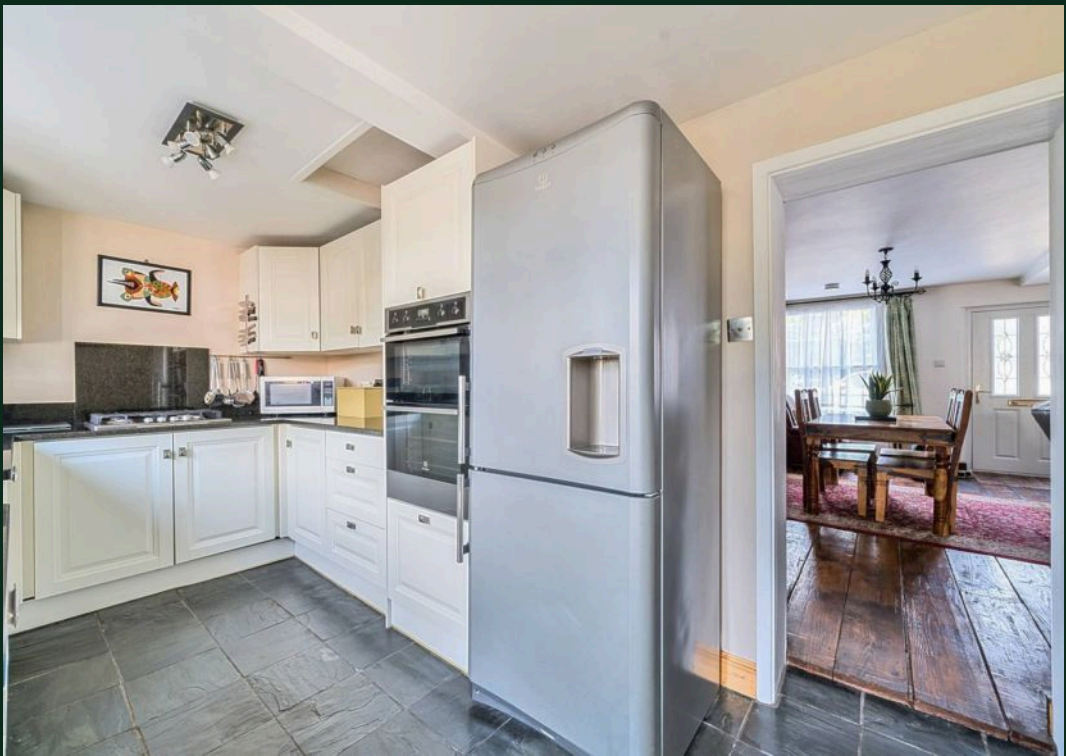
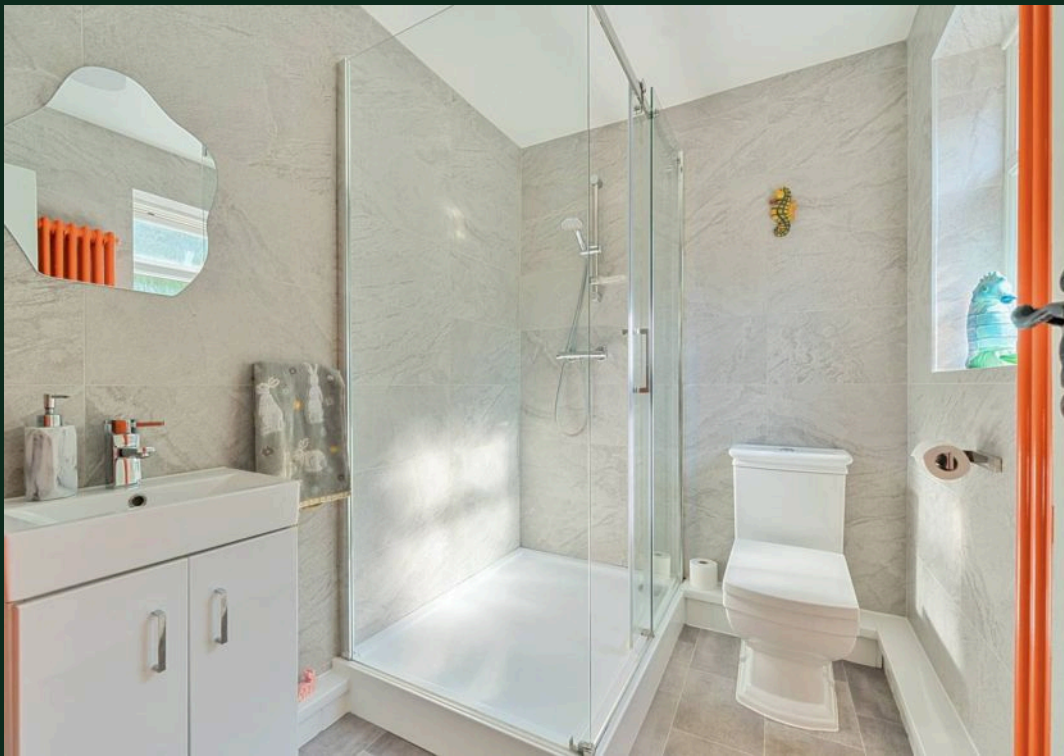
EPC Energy Efficiency Rating: E

EPC Environmental Impact Rating:

- 1856 period, three bedroom property situated in Queenborough's picturesque High Street close to the sea and Harbour
- Open plan lounge/diner with bespoke sash windows and original tiled fireplace
- Handy utility room with fitted units and downstairs shower room
- Fitted kitchen with Granite worktops and fitted dishwasher, oven, hob and grill
- Main bedroom has dressing room feature
- Spacious family bathroom with Granite Composite tiles
- Beautiful enclosed cottage garden with raised fish pond and extended space to rear incorporating patio and vegetable garden
- Fantastic coastal walks close by as well as Queenborough's Harbour
- Close to all local amenities including Primary School, shops, pubs, Train Station, Community Centre and Library
- Local Car Park opposite offers free parking and a Tea Room is close by







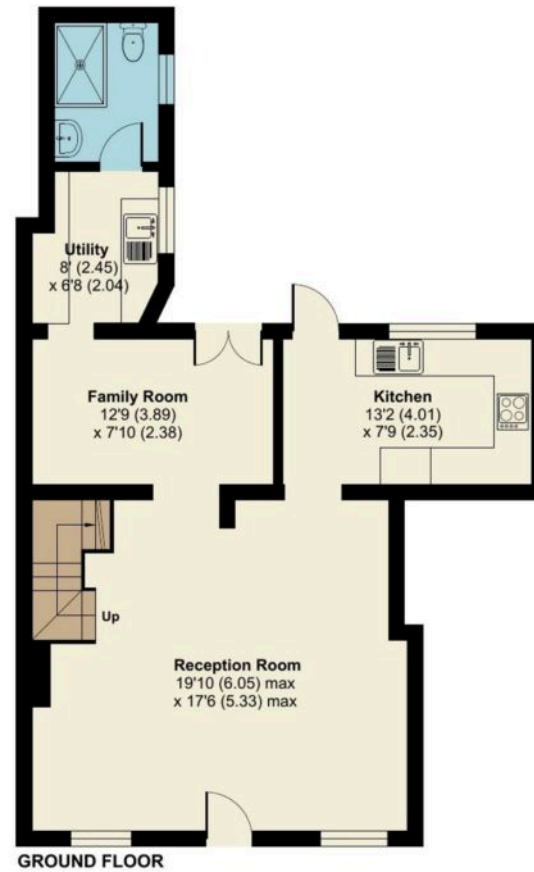




# High Street, Queenborough, ME11

Approximate Area = 1157 sq ft / 107.4 sq m

For identification only - Not to scale







## Homely Bespoke Estate Agents

10 Orchard Way, Eastchurch – ME12 4DS

07817 727321

[lynne@homelyproperties.co.uk](mailto:lynne@homelyproperties.co.uk)

[www.homelyproperties.co.uk](http://www.homelyproperties.co.uk)