



1 Abbot Lane, Shepton Mallet
Shepton Mallet

£400,000

1 Abbot Lane

Shepton Mallet, Shepton Mallet

NO CHAIN. An impressive 5 bedroom town house located on the outskirts of Shepton Mallet, with separate 2 storey annex with log burner. Double garage, parking for 3 vehicles and enclosed rear garden.

Council Tax band: D

Tenure: Freehold

EPC Energy Efficiency Rating: C

EPC Environmental Impact Rating:

- ** NO CHAIN **
- Stunning 5 Bedroom Family Home
- Separate 2 Storey Annex with Log Burner
- Lounge with French Doors Leading into the Garden
- En-suite, Family Bathroom and Cloakroom
- Low Maintenance Rear Garden
- Double Garage with Lighting and Power
- Parking for 3 Vehicles at Rear
- Double Glazing and GCH Throughout
- Situated on Popular Tadley Acres Development







GARDEN

Low maintenance rear garden, with access to the double garage

REAR GARDEN

OFF STREET

2 Parking Spaces

Parking for 2 cars at the rear of the property.

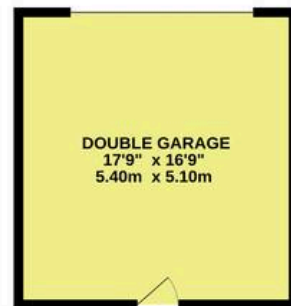
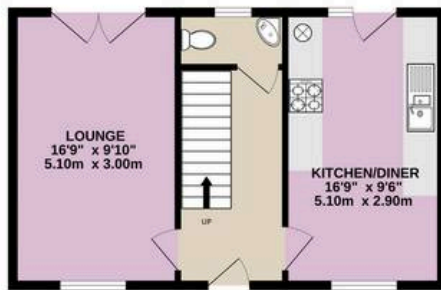
DOUBLE GARAGE

2 Parking Spaces

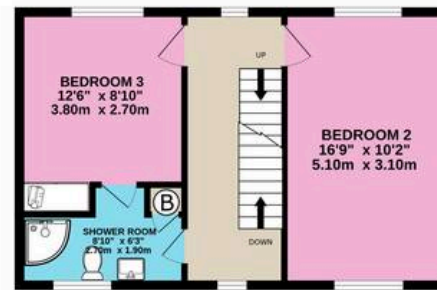
Double garage with lighting and power. Door at rear leads in to the garden and house



GROUND FLOOR
732 sq.ft. (68.0 sq.m.) approx.



1ST FLOOR
434 sq.ft. (40.4 sq.m.) approx.



2ND FLOOR
458 sq.ft. (42.5 sq.m.) approx.

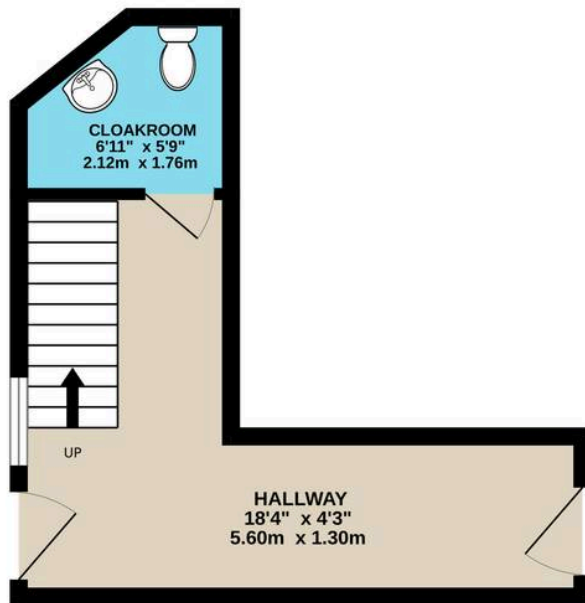


TOTAL FLOOR AREA : 1625 sq.ft. (150.9 sq.m.) approx.

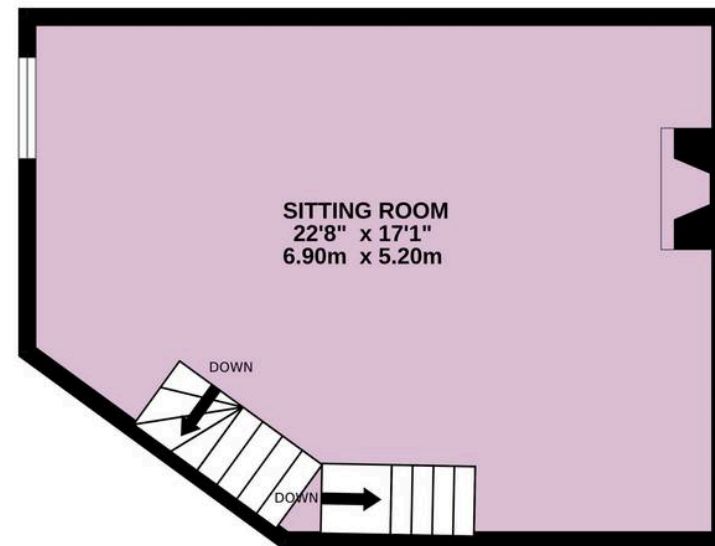
Whilst every attempt has been made to ensure the accuracy of the floorplan contained here, measurements of doors, windows, rooms and any other items are approximate and no responsibility is taken for any error, omission or mis-statement. This plan is for illustrative purposes only and should be used as such by any prospective purchaser. The services, systems and appliances shown have not been tested and no guarantee as to their operability or efficiency can be given.

Made with Metropix ©2025

GROUND FLOOR
186 sq.ft. (17.3 sq.m.) approx.



1ST FLOOR
355 sq.ft. (33.0 sq.m.) approx.



TOTAL FLOOR AREA : 541 sq.ft. (50.3 sq.m.) approx.

Whilst every attempt has been made to ensure the accuracy of the floorplan contained here, measurements of doors, windows, rooms and any other items are approximate and no responsibility is taken for any error, omission or mis-statement. This plan is for illustrative purposes only and should be used as such by any prospective purchaser. The services, systems and appliances shown have not been tested and no guarantee as to their operability or efficiency can be given.

Made with Metropix ©2026

Homely Bespoke Estate Agents

Covering Wells, Glastonbury, Street and Shepton Mallet

07566 7566 99

anne@homelyproperties.co.uk

www.homelyproperties.co.uk