



18 Feltham Close, Wells
Wells

Offers Over **£345,000**

18 Feltham Close

Wells, Wells

This stunning 3 bedroom semi-detached family home has a master bedroom with en-suite, family bathroom, enclosed rear garden and garage conversion. Built in 2020, the property benefits from the remaining NHBC warranty.

Council Tax band: C

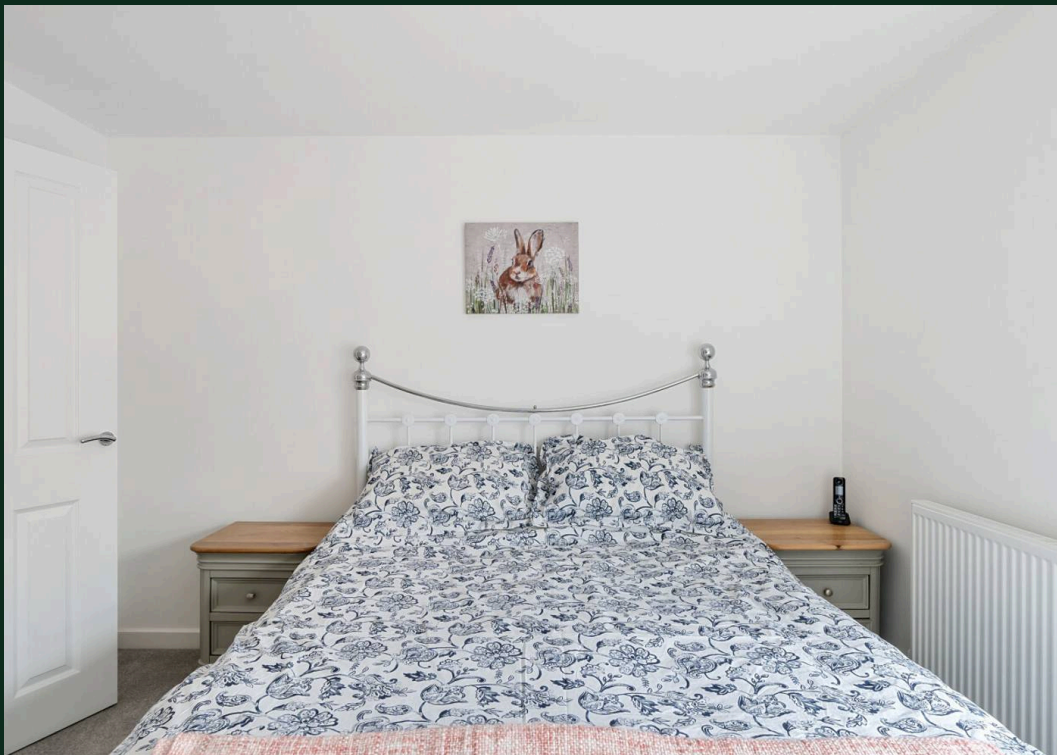
Tenure: Freehold

EPC Energy Efficiency Rating: B

EPC Environmental Impact Rating: B

- Stunning 3 Bedroom Family Home
- Immaculately Presented Throughout
- Master Bedroom with En-suite
- Large Dining Kitchen
- Off Street Parking for 2 Cars
- Garden Room Potential Home Office or Gym
- GCH and UPVC Double Glazing Throughout
- Super-Fast Fibre Broadband
- Close to Schools and Local Amenities
- Remainder of NHBC warranty





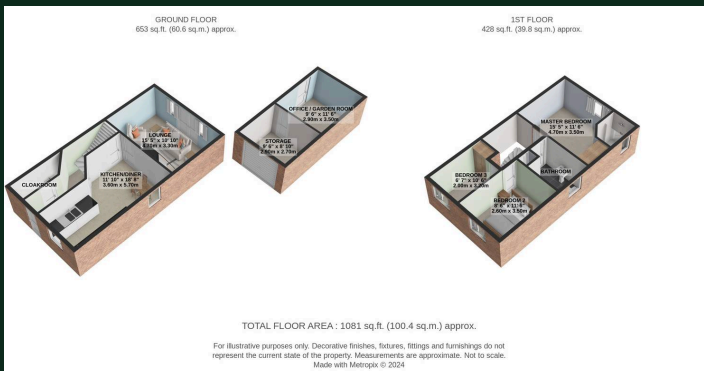


GARDEN

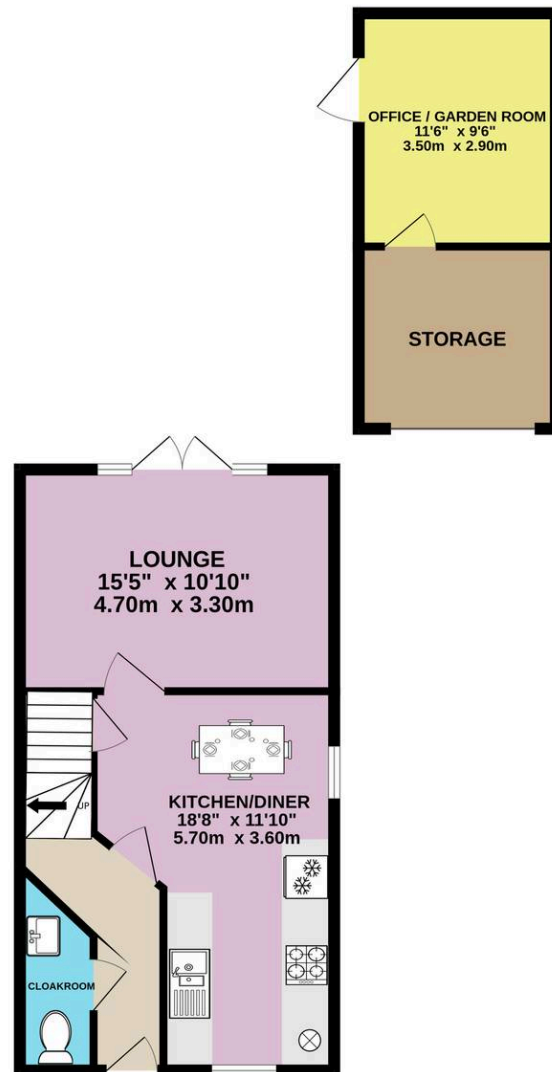
Easy maintenance garden with side gate access and door into the separate Garden Room

DRIVEWAY

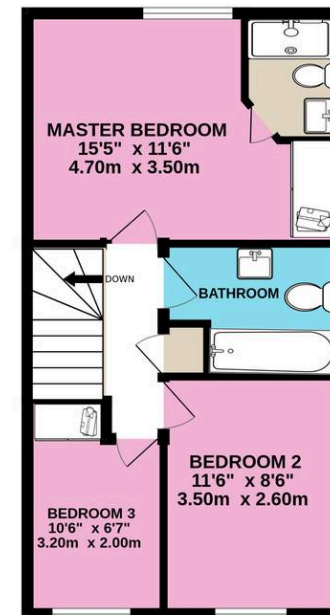
2 Parking Spaces



GROUND FLOOR
653 sq.ft. (60.6 sq.m.) approx.



1ST FLOOR
428 sq.ft. (39.8 sq.m.) approx.



TOTAL FLOOR AREA : 1081 sq.ft. (100.4 sq.m.) approx.

Whilst every attempt has been made to ensure the accuracy of the floorplan contained here, measurements of doors, windows, rooms and any other items are approximate and no responsibility is taken for any error, omission or mis-statement. This plan is for illustrative purposes only and should be used as such by any prospective purchaser. The services, systems and appliances shown have not been tested and no guarantee as to their operability or efficiency can be given.
Made with Metropix ©2024



Homely Bespoke Estate Agents

Covering Wells, Glastonbury, Street and Shepton Mallet

07566 7566 99

anne@homelyproperties.co.uk

www.homelyproperties.co.uk