



24 Blandford Road, Shepton Mallet
Shepton Mallet

Guide Price **£350,000**

24 Blandford Road

Shepton Mallet, Shepton Mallet

Stunning 4/5 bedroom family home is located on the outskirts of Shepton Mallet. Enclosed garden with pergola. Double garage and additional parking for 2 vehicles.

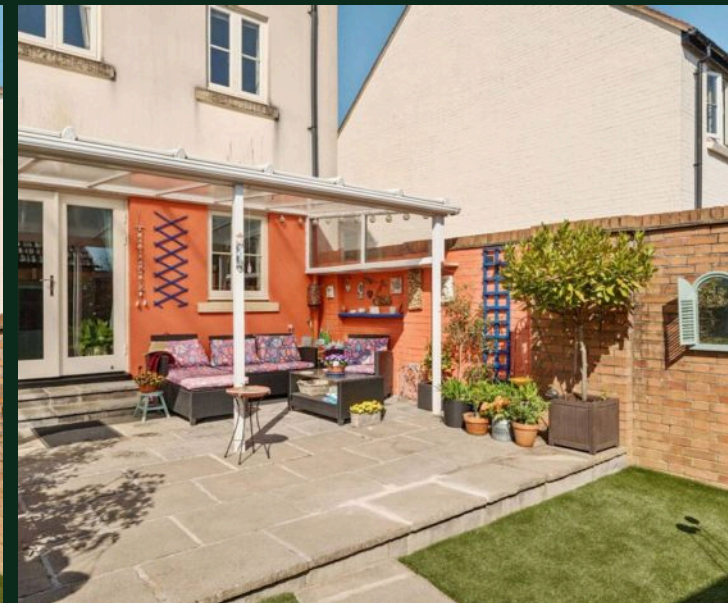
Council Tax band: D

Tenure: Freehold

EPC Energy Efficiency Rating: C

EPC Environmental Impact Rating: C

- Stunning 4 / 5 Bedroom Family Home
- 2 Master Bedrooms Each With En-suite and Built in Storage
- Separate Office, Nursery or Bedroom 5
- Double Garage with Lighting, Power and Eave Storage
- Family Bathroom and Downstairs Cloakroom
- Additional Parking for 2 Vehicles
- Gas Central Heating and Wooden Double Glazing
- Covered Pergola and Enclosed Rear Garden
- Lounge with Patio Doors Leading Out Into The Garden
- Fast Fibre Broadband







GARDEN

DOUBLE GARAGE

2 Parking Spaces

Double width garage with 2 up-and-over doors

DRIVEWAY

2 Parking Spaces

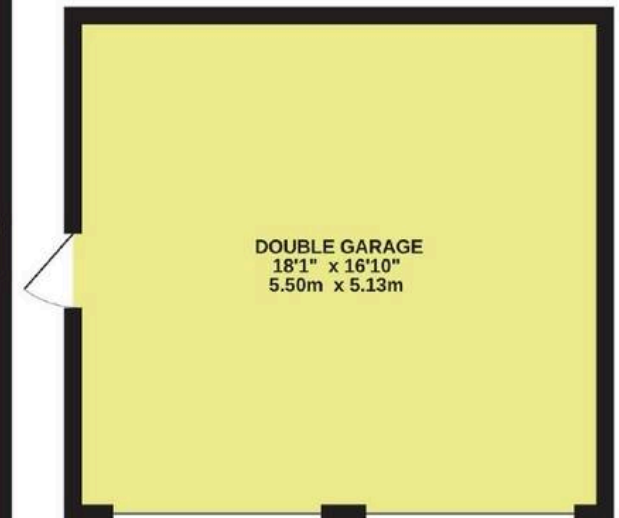
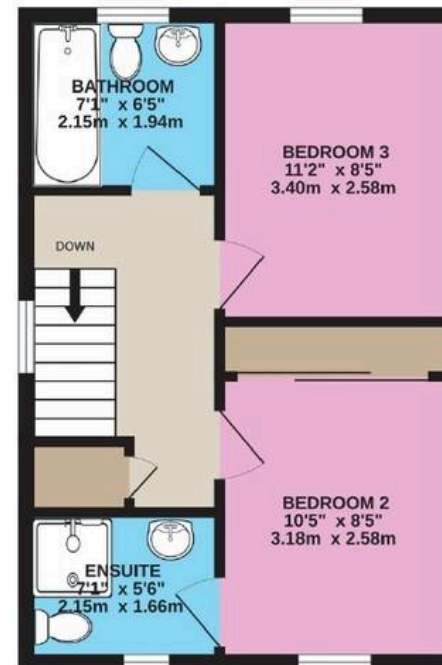
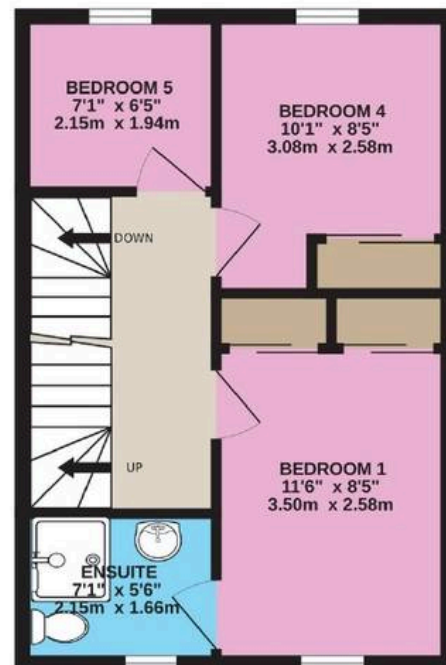


Blandford Road, Shepton Mallet, BA4

APPROX. GROSS INTERNAL FLOOR AREA 1096 SQ FT 101.9 SQ METRES

GARAGE 304 SQ FT 28.2 SQ METRES

TOTAL 1400 SQ FT 130.1 SQ METRES





Homely Bespoke Estate Agents

68 Burley Grove, Bristol – BS16 5PZ

07566756699

anne@homelyproperties.co.uk

www.homelyproperties.co.uk/