



99 Canterbury Road, Sittingbourne
Sittingbourne

Offers in Region of £375,000

99 Canterbury Road

Sittingbourne, Sittingbourne

Spacious 3 bedroom semi in sought after area.
Gated parking for 10+ cars, 25ft cabin, planning for rear extension, 90ft garden, air con, CCTV, near town, schools, and trains to London.
Council Tax band: C

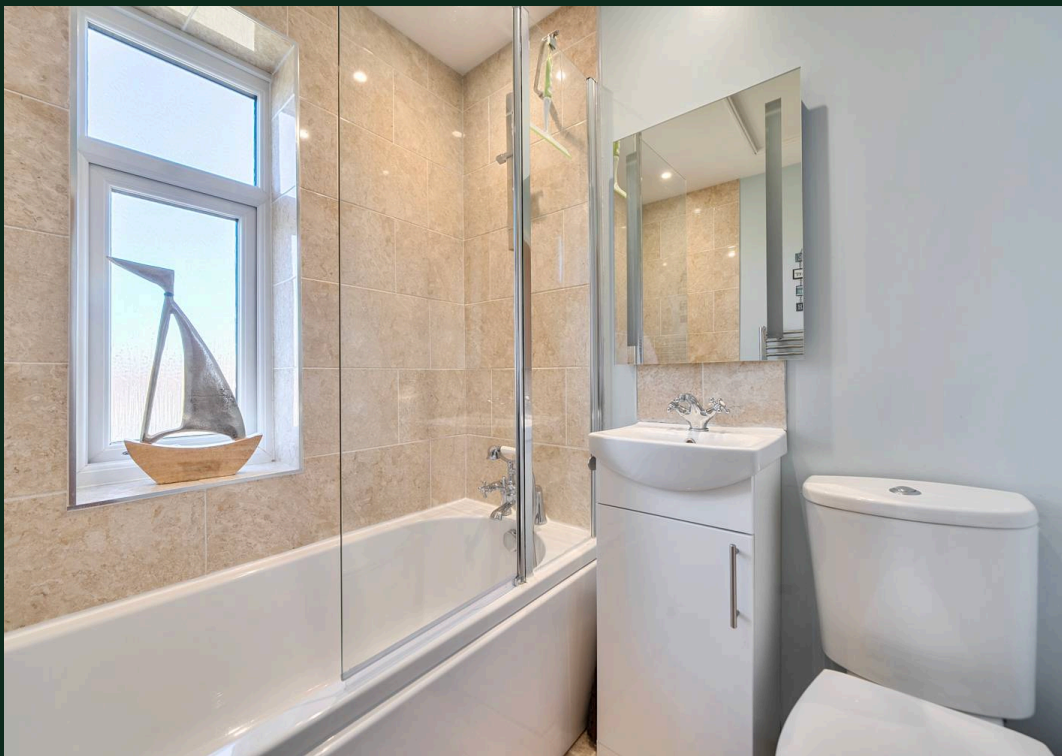
Tenure: Freehold

EPC Energy Efficiency Rating: C

EPC Environmental Impact Rating:

- Double bay fronted 3 bedroom semi detached family home
- Gated driveway with parking to front and rear for 10 plus cars
- Planning permission granted for extension to rear of property (plans available on request)
- Air conditioning and cavity wall insulation
- 25 ft cabin/workshop with multiple uses
- Rear garden approximately 90ft, landscaped with mature plants and trees
- Separate lounge and dining room
- Fitted kitchen with appliances and modern tiled bathroom with shower over
- Alarm system, exterior lighting and CCTV
- Easy access to Sittingbourne Town centre with direct trains to London

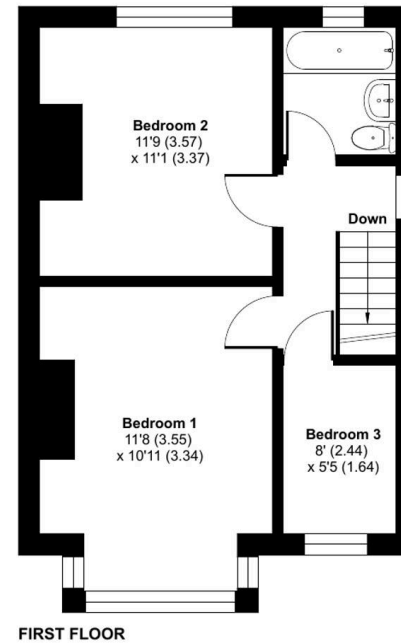
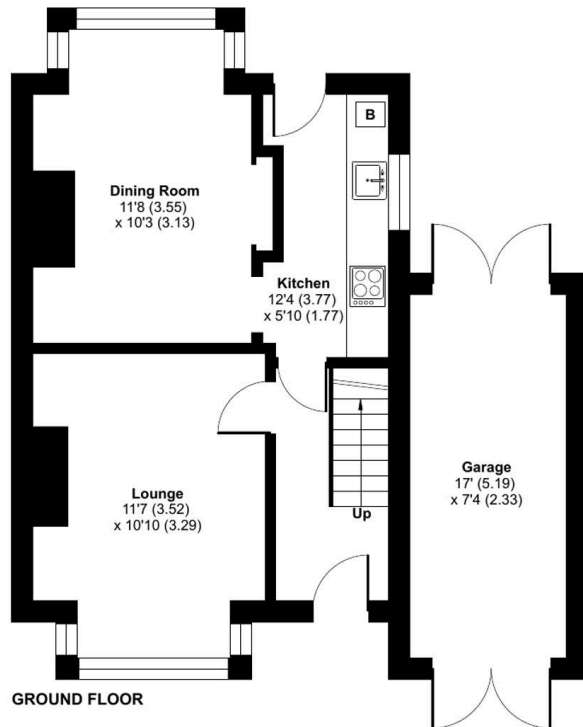
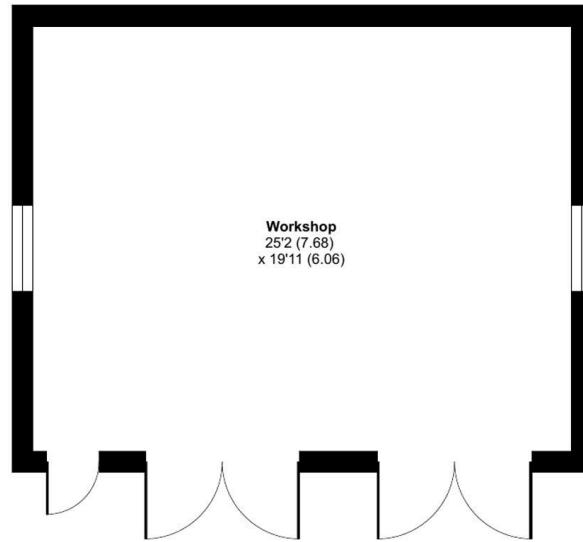






Canterbury Road, Sittingbourne, ME10

Approximate Area = 850 sq ft / 78.9 sq m
Garage = 125 sq ft / 11.6 sq m
Outbuilding = 501 sq ft / 46.5 sq m
Total = 1476 sq ft / 137 sq m
For identification only - Not to scale





Homely Bespoke Estate Agents

10 Orchard Way, Eastchurch - ME12 4DS

07817 727321

lynne@homelyproperties.co.uk

www.homelyproperties.co.uk